

Have your say

Our consultation on division boundaries for Norfolk County Council has been extended

Have your say now via our consultation portal

Today we have extended our consultation on proposals for new council divisions and division boundaries for Norfolk County Council.

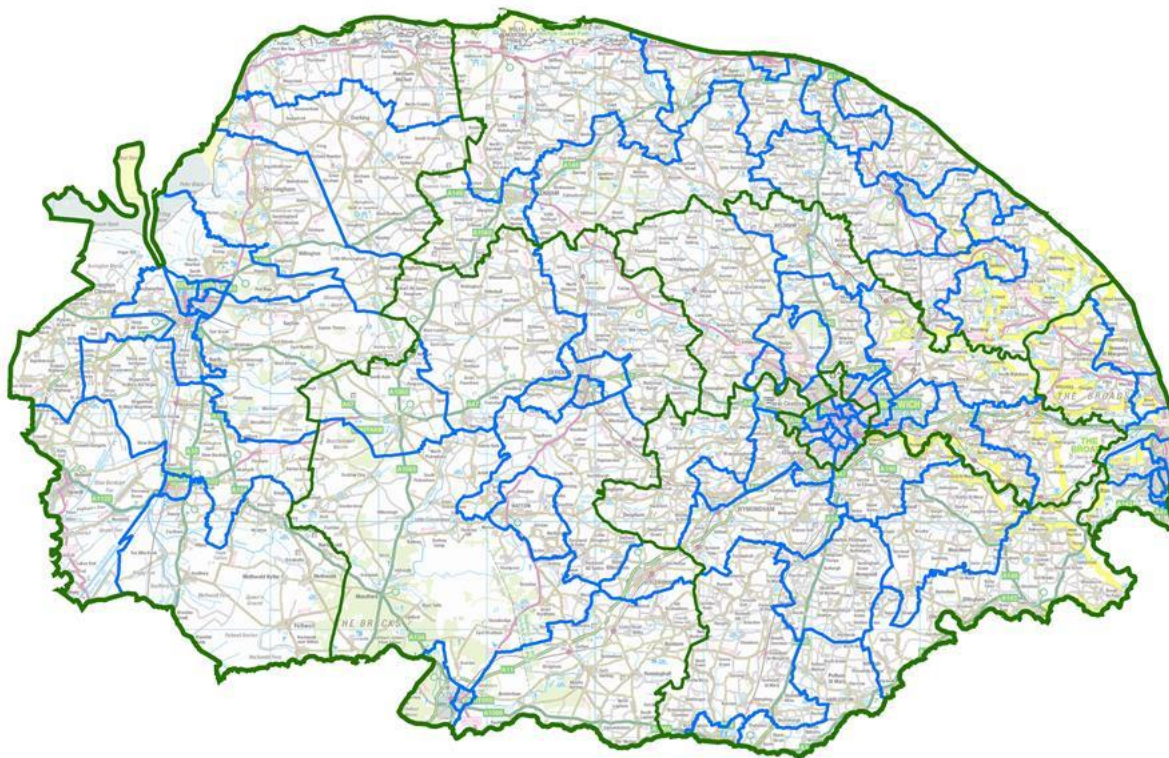
Our consultation will now close on **13 January 2020**.

After we have considered all representations made to us during this consultation, we intend to publish draft recommendations in May 2020.

We will then hold a further period of consultation on our draft recommendations. Our final recommendations are expected to be published in September 2020.

The new electoral arrangements will come into effect at the local elections in **2021**.

If you represent a local organisation or community group in Norfolk, please pass this message on to your members or anyone who you think might be interested in the review. You can share the message by email or through social media by using the buttons at the bottom right of the page.



What is an electoral review?

Our electoral review will recommend new electoral arrangements for Norfolk County Council. We will propose:

- the total number of councillors elected to the council in the future;
- the number of divisions;
- the number of councillors representing each division;
- division boundaries; and
- the names of divisions.

How to get involved

This is a public consultation and we welcome views from individuals and organisations across Norfolk on where they think new division boundaries should be drawn.

We are minded to recommend that **84 councillors** should be elected to Norfolk County Council in the future.

This is **no change** from the current number of councillors.

We are now inviting proposals to help us draw up a pattern of divisions to accommodate **84 councillors**.

In drawing up new electoral divisions, we must balance legal criteria, namely:

- to deliver electoral equality: where each councillor represents roughly the same number of electors as others across the county;
- that the pattern of divisions should, as far as possible, reflect the interests and identities of local communities;
- that the electoral arrangements should provide for effective and convenient local government.
- The council has formally asked the Commission to carry out a single-member division review. This means that the Commission will aim to draw up a pattern of electoral divisions where each division is represented by one county councillor.

We will treat all submissions equally, and judge each case on its merits and against the legal criteria.

If you wish to put forward a view, we would also urge you to ensure that evidence supports your submission.

For example, if you wish to argue that two areas should be included in the same electoral division, make sure you tell us *why* they should be together, providing evidence about community facilities, ties, organisations, and amenities, rather than simply asserting that they belong together.

There is more advice on [our website](#) about how you can get involved in the consultation.

Our website features [technical guidance](#) that explains the process and our policies, as well as guidance on how to take part in each part of the process.

We have also set up a webpage dedicated to the review of Norfolk, where you can find all the relevant information.

You can also access interactive maps of the current division boundaries across Norfolk on our [specialist consultation portal](#). The portal also allows you to draw your own boundaries, mark areas of interest on the map and upload documents directly to the site.

Get in touch

We welcome comments on division arrangements by **13 January 2020**. Representations should be made:

- Through our [interactive consultation portal](#), where you can explore the maps of the recommendations, draw your own boundaries and make comments;

- By email to reviews@lgbce.org.uk;

- Or in writing to Review Officer (Norfolk), Local Government Boundary Commission for England, 1st Floor, Windsor House, 50 Victoria Street, London, SW1H 0TL



Local Government Boundary Commission for England, 1st Floor, Windsor House, 50 Victoria Street, London, SW1H 0TL

You're receiving this email because you represent an organisation that we believe will be interested in this electoral review.



[Preferences](#) | [Unsubscribe](#)